

# Test to Stay in School

*Overview for Telra Families*



**THE ABC SCIENCE**  
COLLABORATIVE

Learning | Informed Decision-Making | Research



**TELRA**  
INSTITUTE

# Introducing the ABC Science Collaborative

## What Is the ABC Science Collaborative?

A program that pairs scientists and physicians with school and community leaders to help understand the most current and relevant information about COVID-19. We are funded by the National Institutes of Health.



**THE ABC SCIENCE**  
COLLABORATIVE

Learning | Informed Decision-Making | Research

## The Team

**Public health scientists and physicians** affiliated with the Duke School of Medicine, the Duke Clinical Research Institute, and the University of North Carolina School of Medicine.



# Test to Stay Protocol Overview (Telra Institute version)

- **Protocol:**

- Participants in school communities who have been exposed to SARS-CoV-2 will be tested for COVID-19 daily over a 7-day period (not including weekends) using a rapid antigen test
- Mitigation practices including masking, the context of exposure (classroom, school bus, after school sporting event, lunch, etc.), and results of COVID-19 tests will be documented.

- **Impact:**

- For the school community, **this study will permit students and staff to stay in school following unmasked close contact exposure provided they remain asymptomatic, continue to wear a mask per school policies, and continue to test negative on repeated rapid antigen tests that are conducted in schools,** minimizing disruption to school and home operations.
- The broader impact that data collection has on advancing the scientific understanding of COVID-19 and associated outcomes may benefit others in the future.

# Eligibility Requirements

Per NCDHHS, in order to participate in the Test to Stay study

- **The school district must:**

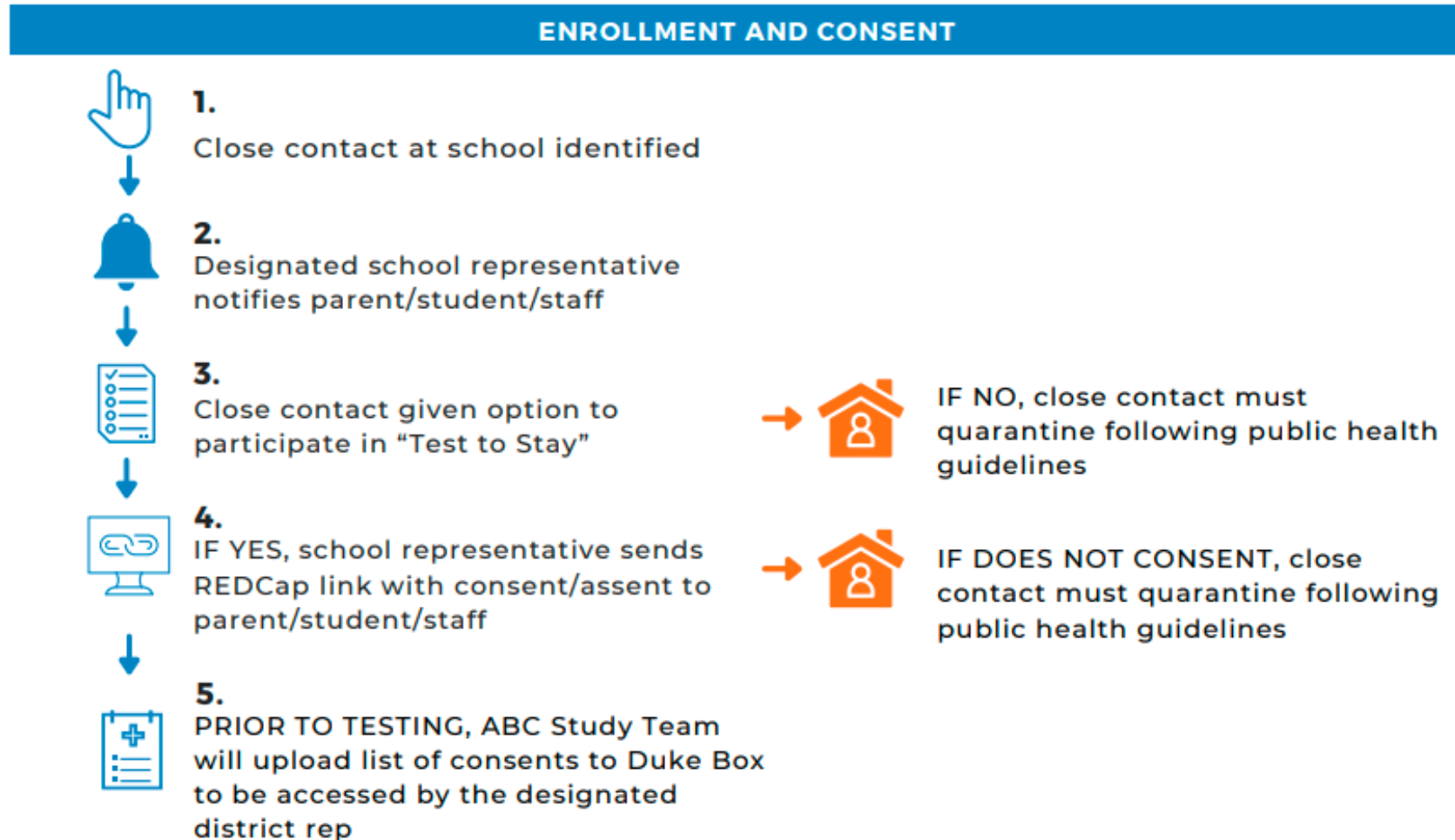
- Have a universal masking policy (“mask mandate”) to participate in a test-to-stay program.

- **The individual must:**

- Be a K-12 student or staff member;
- Be entirely asymptomatic of COVID-19;
- Wear a mask indoors when at school for the entirety of the program;
- Have been exposed to the person with COVID-19 at school only. *This protocol is not applicable to exposures that occur outside of school or in the community (e.g., in a household, social activity).*

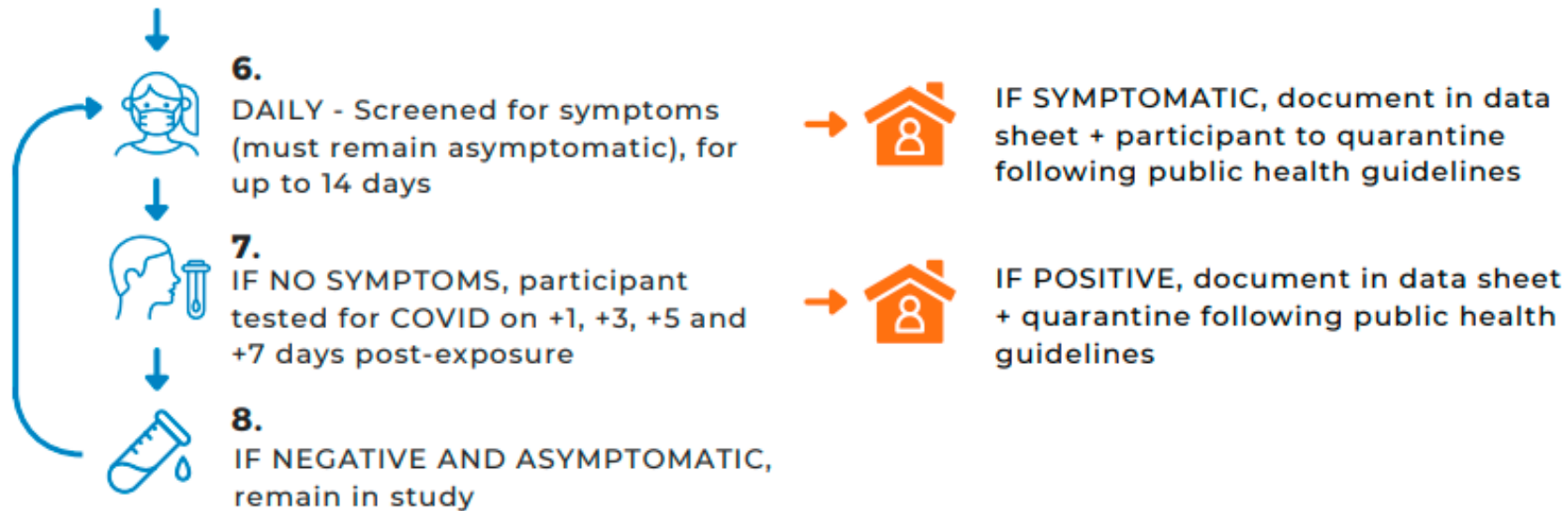
**Participation in the Test to Stay research study is OPTIONAL:** Telra Institute is responsible for ensuring the arrangements for testing are made. Testing should only be conducted following receipt of applicable consent/assent from the individual and/or parent/guardian. Individuals can choose not to participate but must follow the district’s quarantine guidelines.

# Process Detail – Enrollment and Consent



# Process Detail – Testing and Reporting

## TESTING



## RESULTS REPORTING



- 9.** EVERY FRIDAY, district representative aggregates weekly data for all schools and uploads single spreadsheet to district-specific folder on Box by 1pm (Note: no other districts will have access to your folder). Each Friday, upload the most current data spreadsheet with a current date.

# Testing occurs over 7 days

Standard test day for  
ABC research project

Adjusted test day for  
ABC research project

Additional test day for  
Telra protocol

		Exposure Day (Day 0 - pick day, follow vertically)				
		Monday	Tuesday	Wednesday	Thursday	Friday
Exposure Notification Day	Monday					Day 1 Test
	Tuesday	Day 1 Test				Day 2 Test
	Wednesday	Day 2 Test	Day 1 Test			Day 3 Test
	Thursday	Day 3 Test	Day 2 Test	Day 1 Test		Day 4 Test
	Friday	Day 5 Test	Day 3 Test	Day 3 Test	Day 1 Test	Day 5 Test
	Saturday	Day 5 Test		Day 3 Test		
	Sunday		Day 5 Test		Day 3 Test	Day 7 Test
	Monday	Day 7 Test	Day 5 Test	Day 5 Test	Day 3 Test	Day 7 Test
	Tuesday		Day 7 Test	Day 6 Test	Day 5 Test	
	Wednesday			Day 7 Test	Day 6 Test	
	Thursday				Day 7 Test	
	Friday					

# Consent forms for testing

Parent or guardian must complete **both** consent forms

- **Consent form for COVID-19 Rapid-Test:**

- [Link](#) - This is a pdf form. It can be signed electronically or printed and signed on paper.
- Return via email to [frontdesk@telra.org](mailto:frontdesk@telra.org)

- **Consent form to participate in Test to Stay Research Study**

- [Link](#) - This is an online form. Write in “Telra Institute” where the form asks for a school district
- Though the form is written as if it is being completed *post-exposure*, you *can* complete the form ahead of time so that it is already on file for your student. (That way, in an exposure scenario, your child could be tested and, if asymptomatic and negative, return to class even if we cannot contact you immediately.)

**Participation in the Test to Stay research study is OPTIONAL.**

**Families can consent to COVID-19 testing (the first form) *without* participating in Test to Stay, if they wish. But in that case, exposed students would be required to quarantine even if they test negative.**